

ehB
RESIDENTIAL

Your Property - Our Business



17, Prospect Road, Leamington Spa

£1,400 Per
Calendar Month



A three bedroom, spacious family home located in a popular residential area with off road parking. Unfurnished & Available End of March. (Not suitable for students)

Living Room

15'1" x 12'1" (4.6 x 3.7)

Kitchen

12'5" x 12'1" (3.8 x 3.7)

Study

10'2" x 6'6" (3.1 x 2.0)

Bedroom 1

12'1" x 8'10" (3.7 x 2.7)

Bedroom 2

12'1" x 8'10" (3.7 x 2.7)

Bedroom 3

12'5" x 6'6" (3.8 x 2.0)

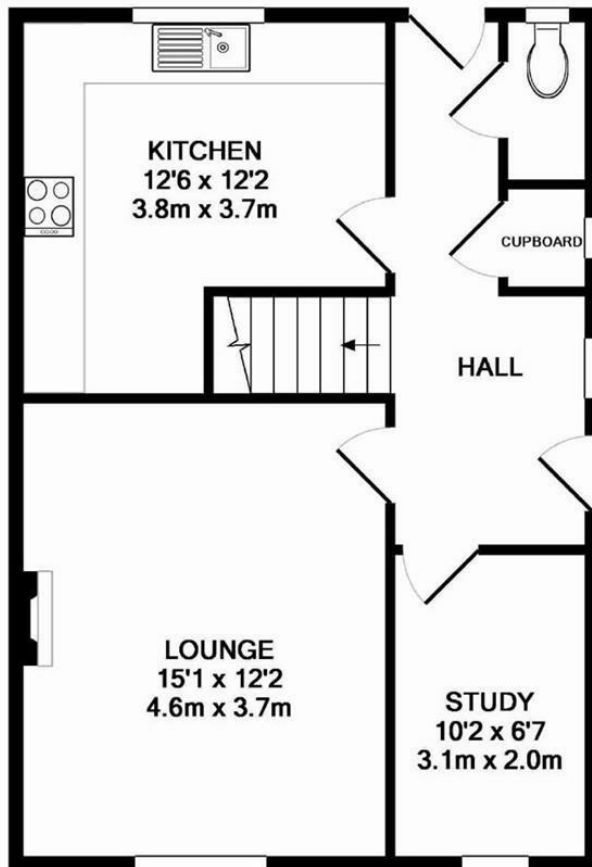


Your Property - Our Business

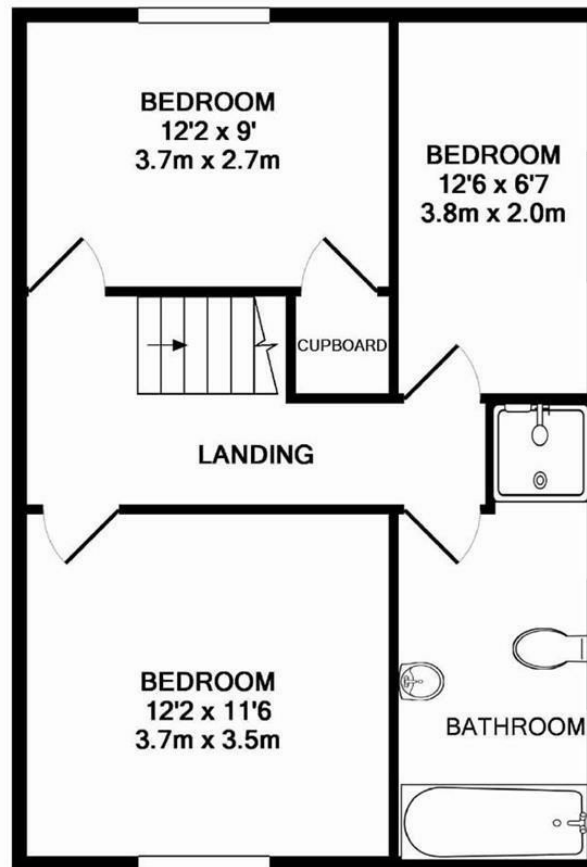
- Residential Estate Agents
- Lettings and Property Managers
- Land and New Homes Agents

Leamington Spa Office
Somerset House
Clarendon Place
Royal Leamington Spa
CV32 5QN

01926 881144 ehbresidential.com



GROUND FLOOR
APPROX. FLOOR
AREA 517 SQ.FT.
(48.0 SQ.M.)



1ST FLOOR
APPROX. FLOOR
AREA 517 SQ.FT.
(48.0 SQ.M.)

TOTAL APPROX. FLOOR AREA 1034 SQ.FT. (96.0 SQ.M.)
Made with Metropix ©2014

Energy Efficiency Rating		Current	Potential
Very energy efficient - lower running costs			
(92 plus)	A		
(81-91)	B		
(69-80)	C		
(55-68)	D	65	79
(39-54)	E		
(21-38)	F		
(1-20)	G		
Not energy efficient - higher running costs			
England & Wales		EU Directive 2002/91/EC	

Also at: Warwick, 17-19 Jury St, Warwick CV34 4EL